

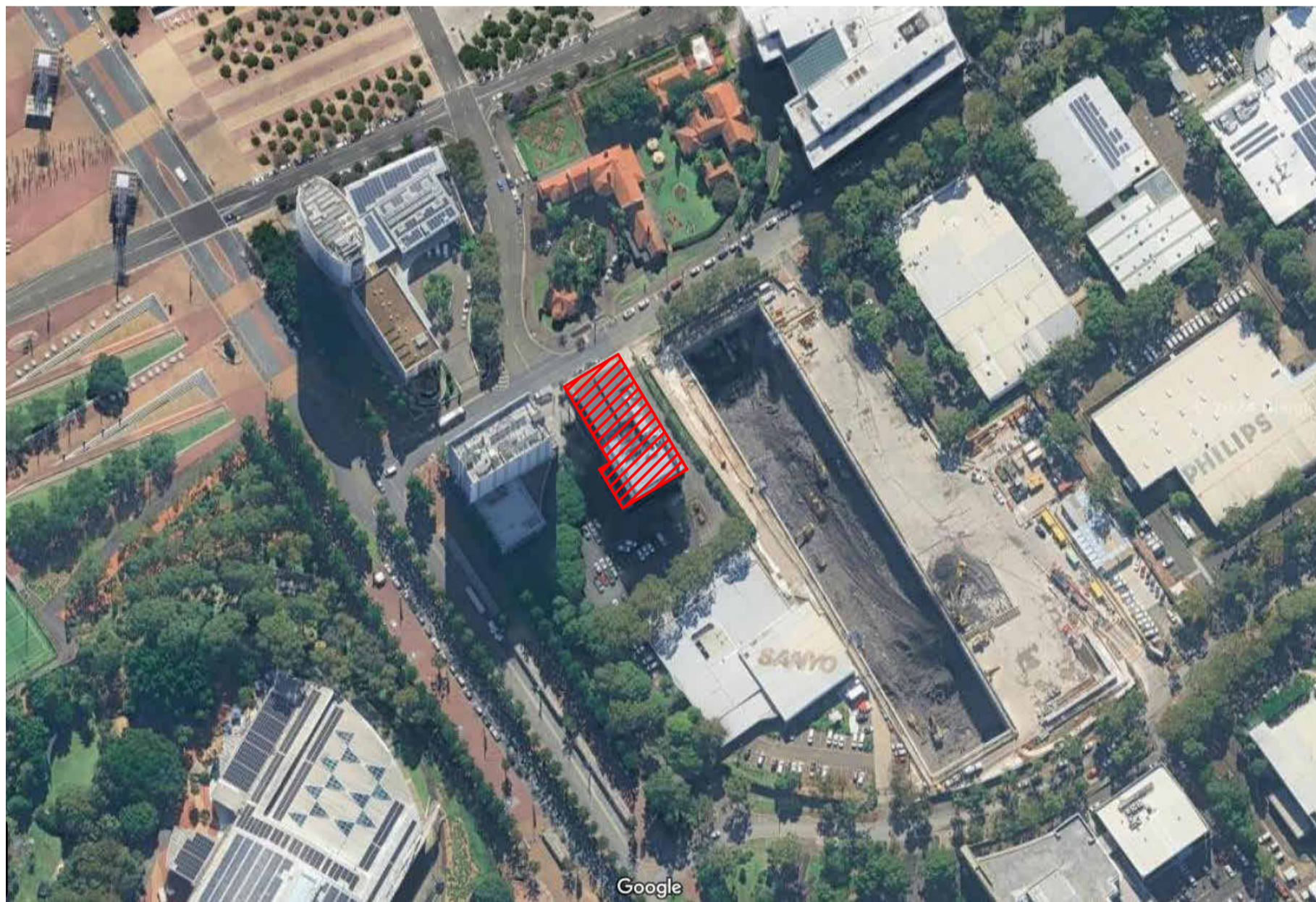
UBT

10 Herb Elliott Ave,
Sydney Olympic Park

Project Information

No. Of Floors : 1
 Building Class : 5
 Extent of Project : GROUND FLOOR
 Total Project Area : 420 m²
 Project Description : GROUND FLOOR AND MEZZANINE ALTERNATIONS AND ADDITIONS

Site Plan



NCC 2022 SPECIFICATION

1. GENERAL
 ALL WORKS SHALL COMPLY WITH THE REQUIREMENTS OF THE NATIONAL CONSTRUCTION CODE (NCC) 2022, VOLUME ONE INCLUDING ALL APPLICABLE SECTIONS, PARTS, SPECIFICATIONS, AND REFERENCED AUSTRALIAN STANDARDS.

2. NCC SECTION B – STRUCTURE
2.1 PART B1 – STRUCTURAL PROVISIONS
B1D4 – DETERMINATION OF STRUCTURAL RESISTANCE OF MATERIALS AND FORMS OF CONSTRUCTION
 STRUCTURAL DESIGN AND CONSTRUCTION SHALL COMPLY WITH THE FOLLOWING AUSTRALIAN STANDARDS, WHERE APPLICABLE:
 • AS/NZS 1664.1 & 1664.2 – ALUMINIUM STRUCTURES
 • AS 1562.1 – DESIGN AND INSTALLATION OF SHEET ROOF AND WALL CLADDING
 • AS 1288 – GLASS IN BUILDINGS – SELECTION AND INSTALLATION
 • AS 2047 – WINDOWS AND EXTERNAL GLAZED DOORS IN BUILDINGS
 • AS 3660.1 – TERMITE MANAGEMENT – NEW BUILDING WORK

3. NCC SECTION C – FIRE RESISTANCE
3.1 PART C2 – COMPARTMENTATION AND SEPARATION
C2D10 – NON-COMBUSTIBLE BUILDING ELEMENTS
 THE FOLLOWING BUILDING ELEMENTS MUST BE NON-COMBUSTIBLE:
 A) EXTERNAL WALLS INCLUDING FACADE SYSTEMS, FRAMING, INSULATION, AND SARKING
 B) FLOORING AND FLOOR FRAMING OF LIFT PITS
 C) NON-LOADBEARING INTERNAL FIRE-RESISTING WALLS
 D) NON-LOADBEARING SHAFTS CONNECTING MORE THAN TWO STOREYS
 E) LOADBEARING INTERNAL WALLS

C2D11 – FIRE HAZARD PROPERTIES
 ALL MATERIALS AND ASSEMBLIES MUST COMPLY WITH SPECIFICATION C2.10 – FIRE HAZARD PROPERTIES. COMPLIANCE SHALL BE DEMONSTRATED BY TEST REPORTS OR CERTIFICATES ISSUED BY A REGISTERED TESTING AUTHORITY FOR:
 • FLOOR LININGS AND COVERINGS
 • WALL AND CEILING LININGS
 • AIR-HANDLING DUCTWORK
 • SARKING MATERIALS
 • ATTACHMENTS TO FIRE-RESISTING ELEMENTS
 • INSULATION MATERIALS (EXCLUDING SARKING-TYPE MATERIALS)

3.2 SPECIFICATION C2.1 – FIRE-RESISTING CONSTRUCTION
CLAUSE 2 – GENERAL REQUIREMENTS
 • ANY BUILDING ELEMENT SUPPORTING ANOTHER ELEMENT REQUIRING AN FRL MUST HAVE AN FRL NOT LESS THAN THAT OF THE SUPPORTED ELEMENT
 • LINTELS MUST HAVE THE REQUIRED FRL WHERE:
 • LOADBEARING OPENINGS EXCEED 1.8 M
 • NON-LOADBEARING OPENINGS EXCEED 3.0 M
 • FIXINGS, FINISHES, LININGS, SERVICES, OR ANCILLARY ELEMENTS MUST NOT REDUCE THE REQUIRED FRL
CLAUSE 4 – TYPE B FIRE-RESISTING CONSTRUCTION
 • FIRE WALLS MUST MAINTAIN AN FRL OF NOT LESS THAN 240/240/240

3.3 SPECIFICATION C2.10 – FIRE HAZARD PROPERTIES
CLAUSE 3 – FLOOR LININGS AND FLOOR COVERINGS
 • MINIMUM CRITICAL RADIANT HEAT FLUX: 2.2 KW/M²
 • MAXIMUM SMOKE DEVELOPMENT RATE: 750 %/MIN
CLAUSE 4 – WALL AND CEILING LININGS
 WALL AND CEILING LININGS MUST:
 • BE MATERIAL GROUP 1, 2, OR 3
 • HAVE EITHER:
 • SMOKE GROWTH RATE INDEX ≤ 100, OR
 • AVERAGE SPECIFIC EXTINCTION AREA < 250 M²/KG
CLAUSE 5 – AIR-HANDLING DUCTWORK
 • MUST COMPLY WITH AS 4254.1 AND AS 4254.2
CLAUSE 7 – OTHER MATERIALS
 MATERIALS (EXCLUDING FLOOR AND WALL LININGS) MUST HAVE:
 • SPREAD-OF-FLAME INDEX ≤ 9
 • SMOKE-DEVELOPED INDEX ≤ 8 WHERE SPREAD-OF-FLAME INDEX EXCEEDS 5

4. NCC PART C3 – PROTECTION OF OPENINGS
C3D5 – DOORWAYS IN FIRE WALLS
 • EXISTING FIRE WALL OPENINGS MUST BE ASSESSED AND UPGRADED AS REQUIRED
 • FIRE WALL DOORWAYS MUST BE PROTECTED BY DOORS ACHIEVING AN FRL OF -/240/30
C3D15 – OPENINGS FOR SERVICE INSTALLATIONS
C3D16 – CONSTRUCTION JOINTS
 ALL PENETRATIONS AND JOINTS THROUGH FIRE-RESISTING ELEMENTS MUST BE PROTECTED TO MAINTAIN THE REQUIRED FRL.

NCC 2022 SPECIFICATION - CONT.

5. NCC SECTION D – ACCESS AND EGRESS
5.1 PART D1 – EGRESS FROM BUILDINGS
D1D4 – EXIT TRAVEL DISTANCES
D1D5 – DISTANCE BETWEEN ALTERNATIVE EXITS
 REFER TO FIRE ENGINEERING REPORT XXXX

5.2 PART D2 – CONSTRUCTION OF EXITS
D2D7 – INSTALLATIONS IN EXITS
 ELECTRICAL, TELECOMMUNICATIONS, AND GAS SERVICES MUST BE ENCLOSED WITHIN NON-COMBUSTIBLE, SMOKE-SEALED ENCLOSURES.
D2D15 – THRESHOLDS
 • NO STEPS PERMITTED AT INTERNAL EXIT DOOR THRESHOLDS
 • ACCESSIBLE EXTERNAL EXITS MUST PROVIDE A 1:10 RAMP IN LIEU OF STEPS
D2D21 – OPERATION OF DOOR LATCHES
 • OPERABLE WITHOUT A KEY
 • SINGLE DOWNWARD OR PUSHING ACTION
 • MOUNTED 900-1100 MM ABOVE FLOOR LEVEL
 • SUITABLE FOR PERSONS UNABLE TO GRIP
 • FAIL-SAFE UNLOCKING ON FIRE ALARM ACTIVATION (AS 1670.1)
 • TWO-LEAF DOORS REQUIRE COMPLIANT HARDWARE TO ONE LEAF ONLY

5.3 PART D4 – ACCESS FOR PEOPLE WITH A DISABILITY
D4D2 – GENERAL BUILDING ACCESS REQUIREMENTS
 • ACCESS MUST BE PROVIDED TO AND WITHIN ALL AREAS NORMALLY USED BY OCCUPANTS
D4D4 – PARTS OF BUILDING TO BE ACCESSIBLE
 • COMPLY WITH AS1428.1

6. NCC SECTION E – SERVICES AND EQUIPMENT
6.1 PART E1 – FIRE-FIGHTING EQUIPMENT
 • FIRE HYDRANTS – REFER TO XXXX
 • FIRE HOSE REELS – REFER TO XXXX
 • FIRE EXTINGUISHERS
 • CLASS F EXTINGUISHERS REQUIRED IN KITCHENS
 • INSTALLATION TO AS 2444

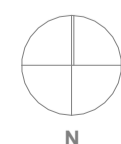
6.2 PART E4 – EMERGENCY LIGHTING AND EXIT SIGNS
 • EMERGENCY LIGHTING AND EXIT SIGNAGE TO COMPLY WITH AS/NZS 2293.1:2018
 • LOCATIONS AND DESIGN TO NCC E4D2–E4D8
 • REFER TO XXXX

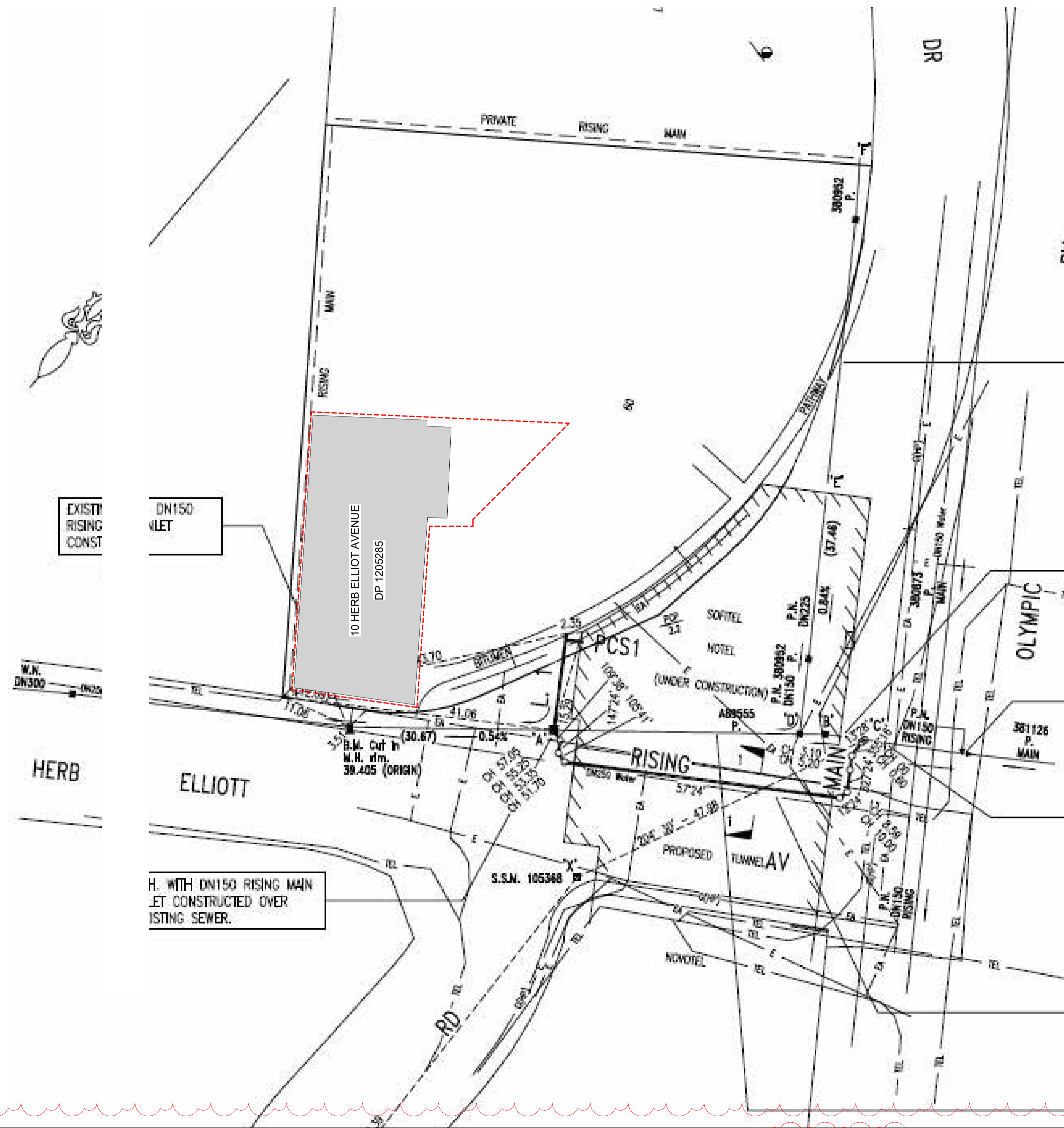
7. NCC SECTION F – HEALTH AND AMENITY
7.1 PART F1 – DAMP AND WEATHERPROOFING
 • SARKING – AS/NZS 4200.1 & 4200.2
 • WET AREAS – AS 3740
 • DAMP-PROOFING – AS/NZS 2904
7.2 PART F2 – SANITARY FACILITIES
 SANITARY FACILITIES ARE OUTSIDE THE SCOPE OF THIS PROJECT AND ARE TO BE VERIFIED BY OTHERS.
7.3 PART F4 – LIGHT AND VENTILATION
 • ARTIFICIAL LIGHTING – AS/NZS 1680.0
 • VENTILATION – AS 1668.2
 • KITCHEN EXHAUST – AS 1668.1 & AS 1668.2

9. NCC SECTION J – ENERGY EFFICIENCY
 REFER TO XXXX FOR NCC 2022 SECTION J COMPLIANCE.

Document Register

000_GENERAL
 IA-010 AIRLOCK DA - COVER SHEET
 IA-011 AIRLOCK DA - SITE PLAN
 IA-012 AIRLOCK DA - PLANS
 IA-013 AIRLOCK DA - ELEVATIONS
 IA-014 AIRLOCK DA - FINISHES





EXISTING RISING CONST

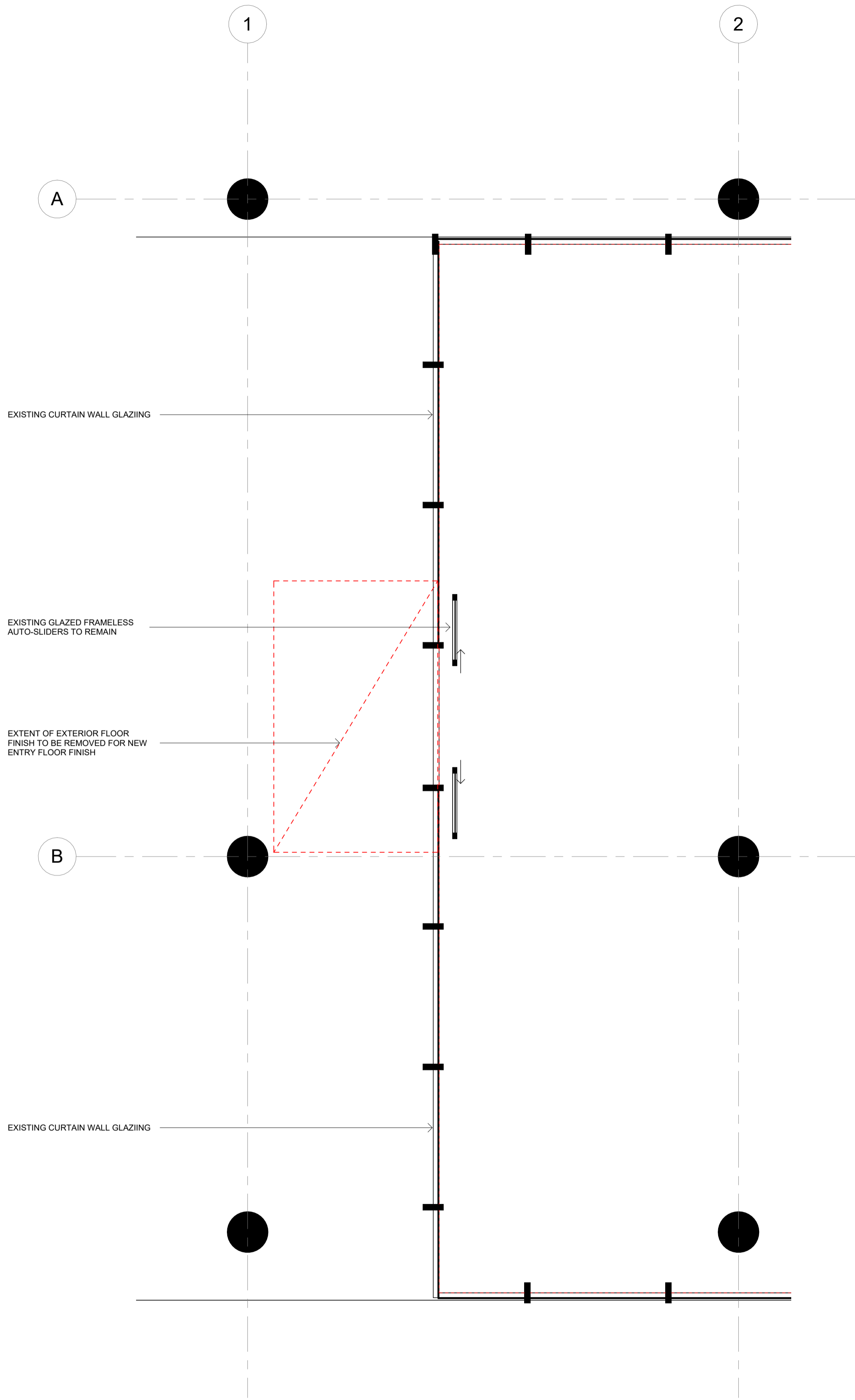
DN150 RISING MAIN

10 HERB ELLIOTT AVENUE
DP 1205285

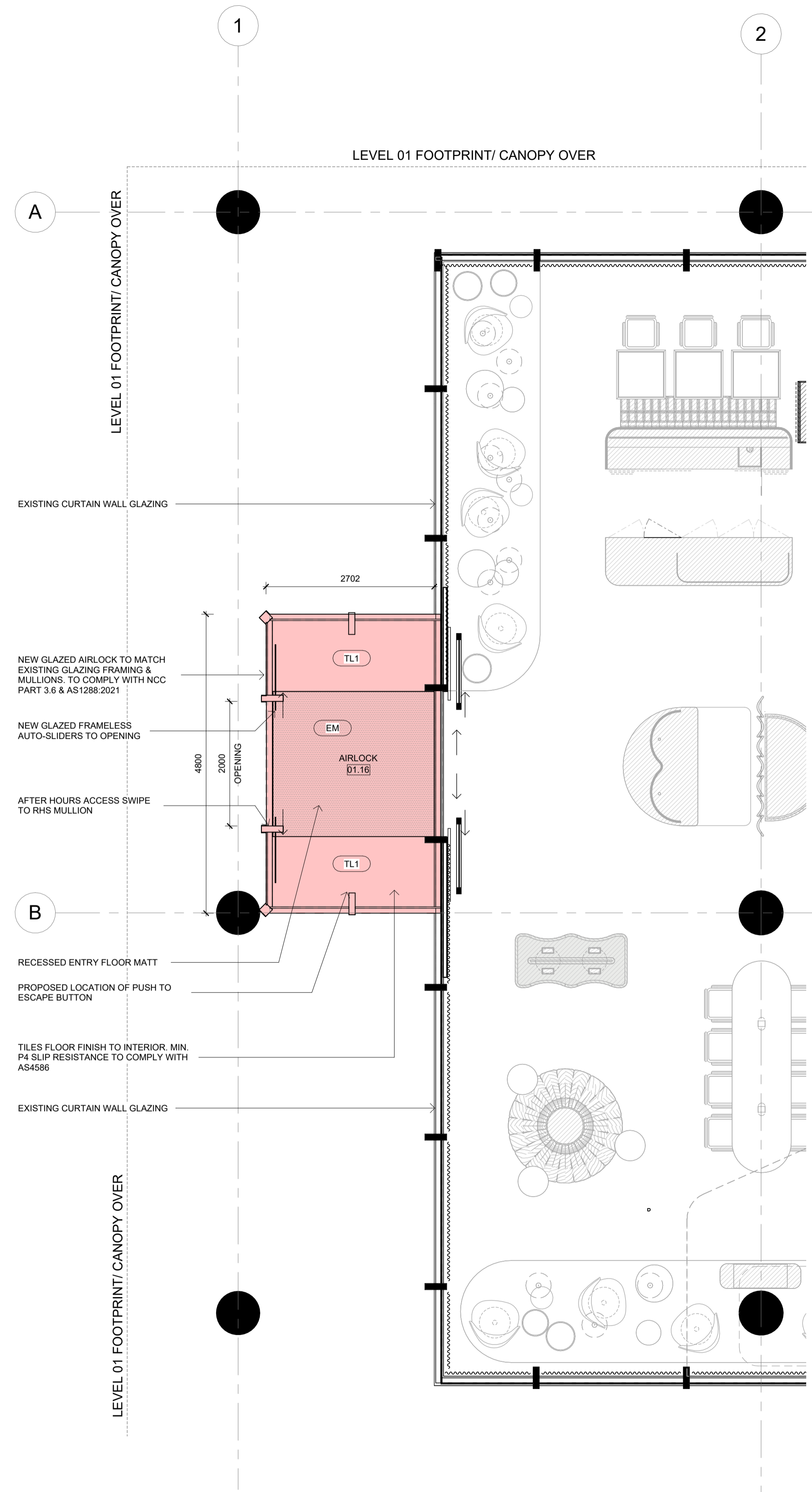
W.N. DN300

HERB ELLIOTT

H. WITH DN150 RISING MAIN JET CONSTRUCTED OVER EXISTING SEWER.



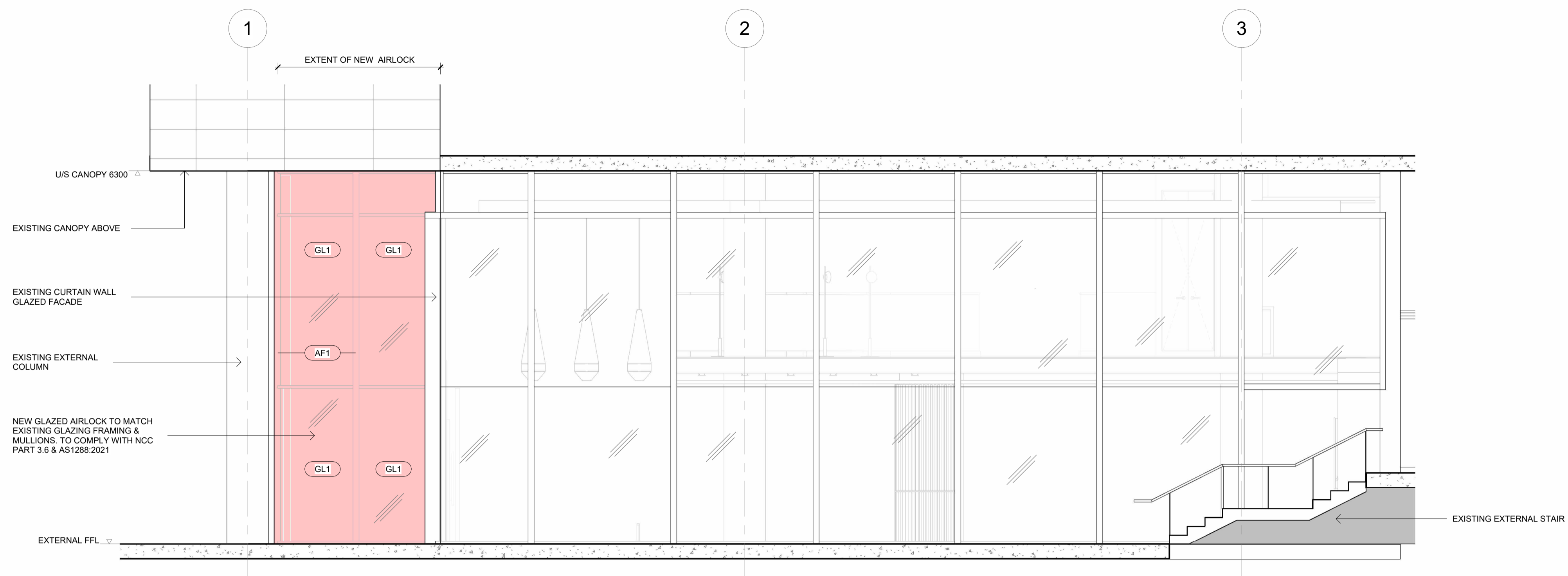
1 AIRLOCK DA DEMOLITION PLAN
1:50



2 AIRLOCK DA GA PLAN
1:50

DA LEGEND	
	NOT WITHIN SCOPE
	TO BE DEMOLISHED
	PROPOSED NEW WORKS

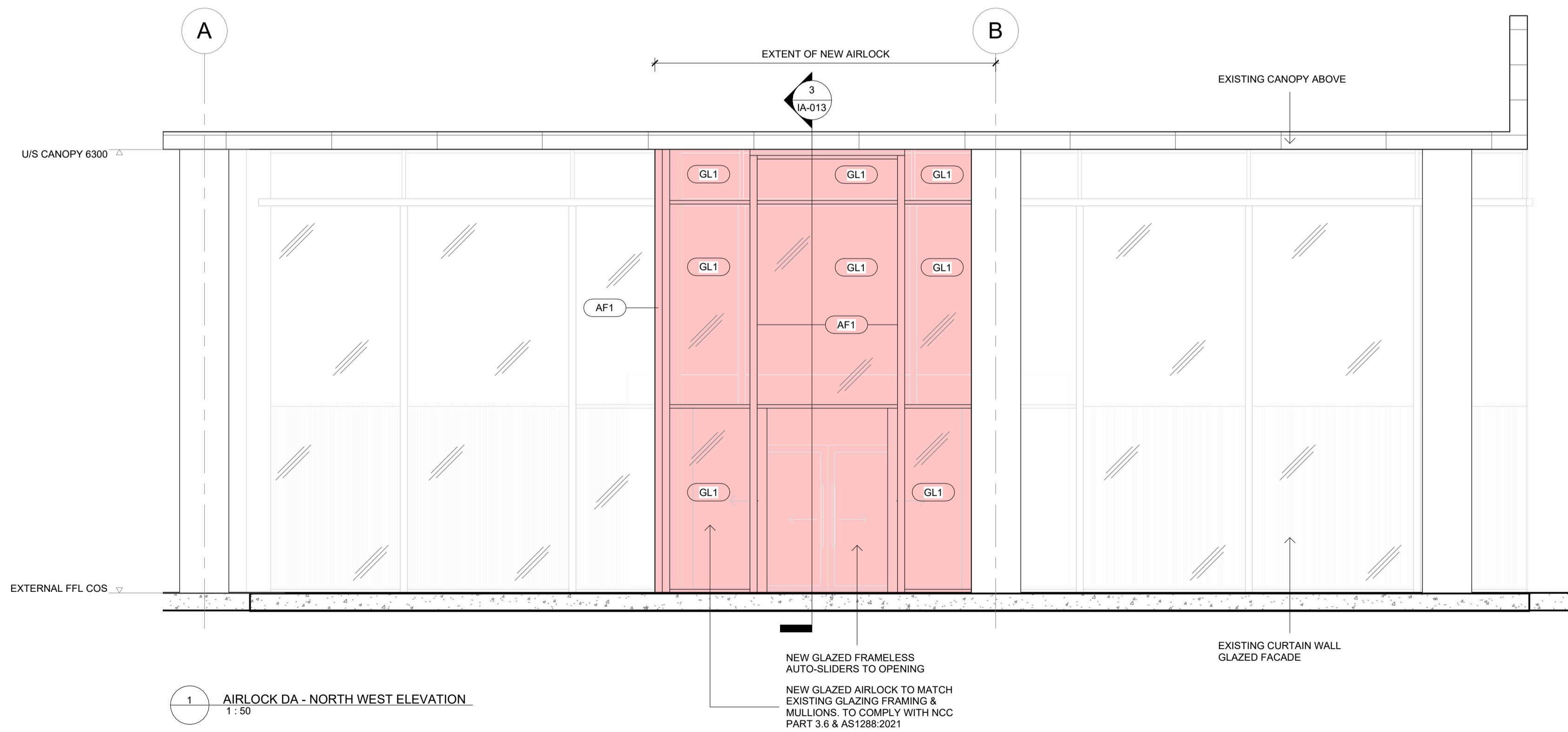




DA LEGEND

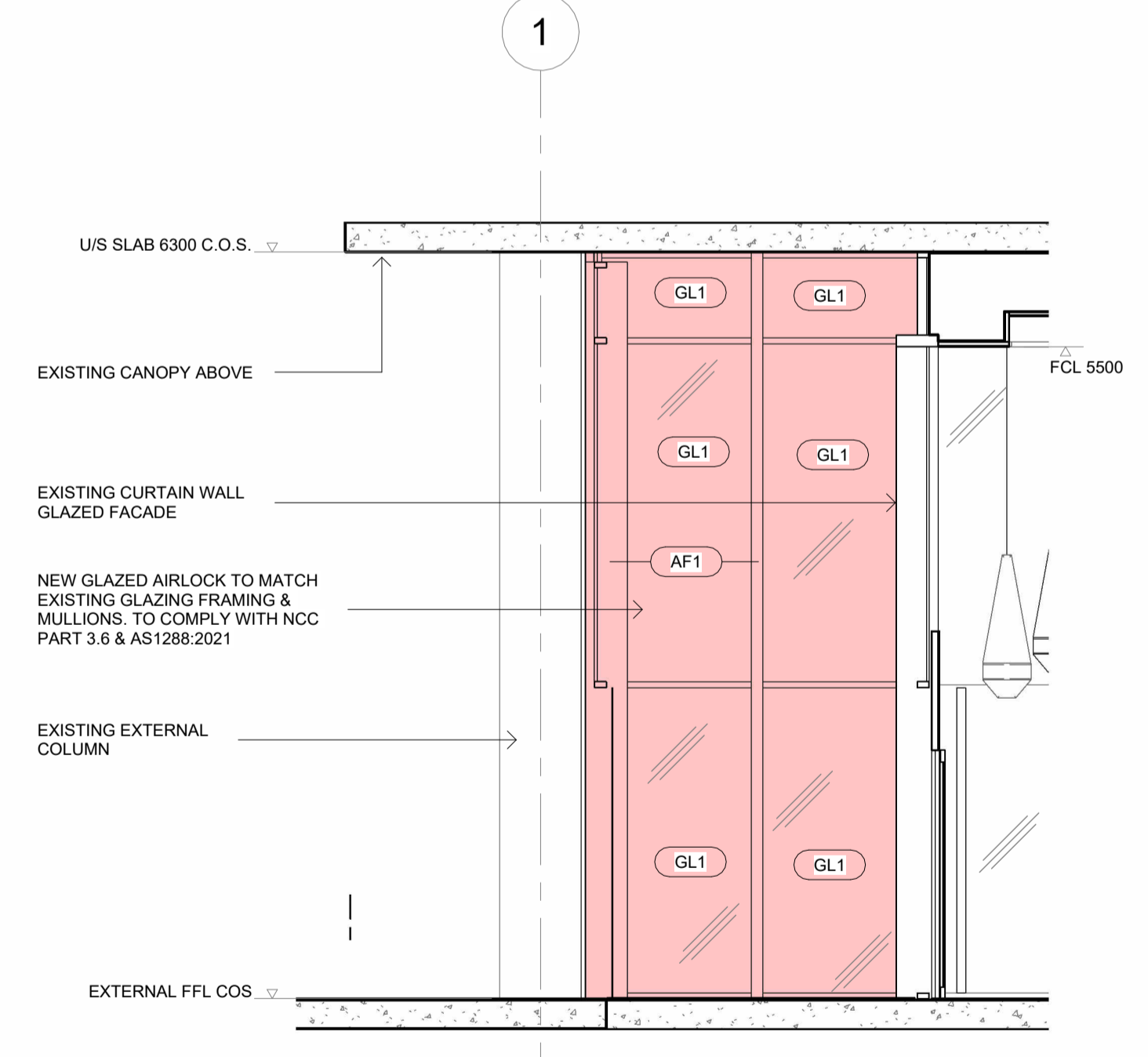
	NOT WITHIN SCOPE
	TO BE DEMOLISHED
	PROPOSED NEW WORKS

2 AIRLOCK DA - SOUTH WEST ELEVATION
1:50



1 AIRLOCK DA - NORTH WEST ELEVATION
1:50

NEW GLAZED FRAMELESS AUTO-SLIDERS TO OPENING
NEW GLAZED AIRLOCK TO MATCH EXISTING GLAZING FRAMING & MULLIONS. TO COMPLY WITH NCC PART 3.6 & AS1288:2021



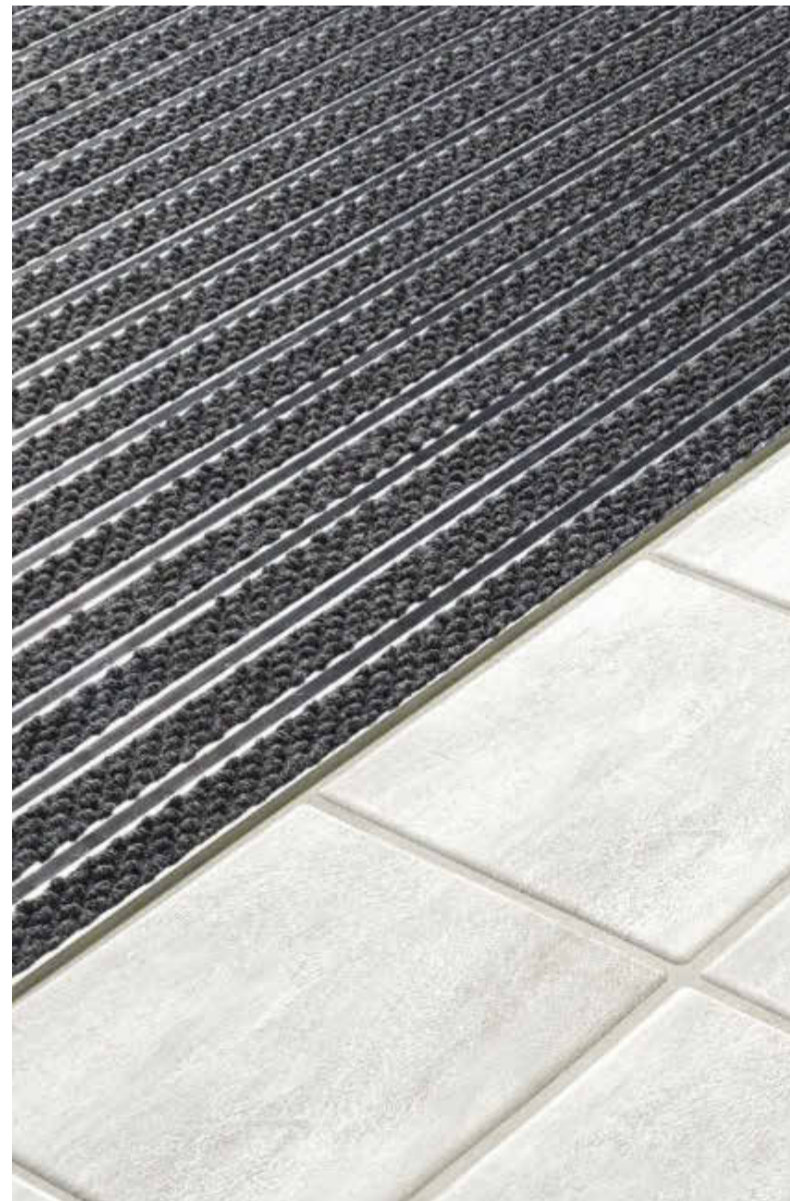
3 IA-013 AIRLOCK DA SECTION
1:50



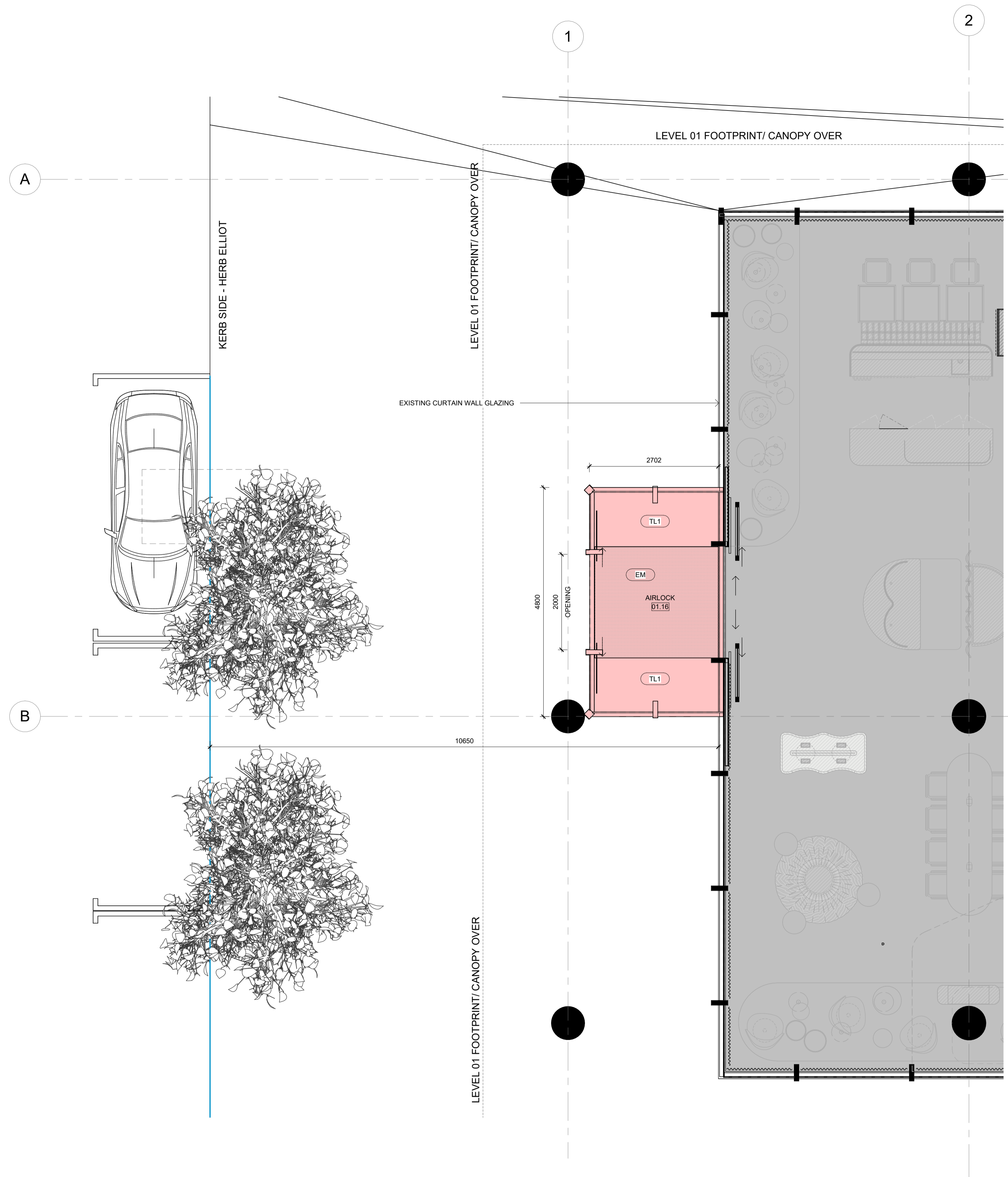
AL1 AIRLOCK TO MATCH EXISTING FACADE GLAZING
GL1 FRAMING & COLOUR SCHEME



TL1 PROPOSED TRAVERTINE STONE TILE



EM PROPOSED ENTRY MATT - MEDIUM GREY



DA LEGEND	
	NOT WITHIN SCOPE
	TO BE DEMOLISHED
	PROPOSED NEW WORKS
	OUT OF SCOPE.

2 AIRLOCK DA DETAILED PLAN
1:50